



Date: _____

P.O.: _____

Qty: _____

Ship Date: _____

Quality Products for the Transportation Industry

Corporate Office: 113 Cedar Street, Akron, NY 14001

Phone: (716) 542-5427 Fax: (716) 542-5947

REQUEST FOR QUOTATION

PLACE AN ORDER

BILL TO: _____

SHIP TO: _____

PREMIUM (Plywood Core)

STANDARD DRY-FREIGHT

ALUMINUM CLAD

STAINLESS STEEL CLAD

LAMINATED ALUMINUM

CARGOGUARD

GENERAL PURPOSE (Plywood Core)

STANDARD DRY-FREIGHT

ALUMINUM CLAD

INSULATED (Foamed in Place)

COLDSAVER

TEMPGUARD

SPECIALTY DOORS

BEVERAGE

NON-WOOD CORE

HINGED TRUSS II

1/2" PREMIUM PLATE

1/4" PREMIUM PLATE

COMPLETE DOOR INCLUDES

- Assembled panel sections with four rows of hinges
- Galvanized steel track
- Counterbalance assembly
- E-Coated corrosion protected hardware
- Top & bottom fixtures
- Lift handle & pull strap
- Lock assembly (77 or 4077 Standard)
- Top seal & bottom channel
- Track rollers
- SAE threaded hardware

OPTIONS:

- UNIVERSAL STYLE (Premium & General Purpose)
- ADD SIDE SEALS (Standard on ColdSaver and TempGuard)
- ADD BOTTOM SEAL
(Premium Only, Seal Standard on all Other Door Types)
- PAINT FINISH COLOR: _____
(White Standard on ColdSaver, Tempguard, Aluminum Clad
Laminated Aluminum, Premium Plate)
- INSIDE RELEASE
- EXTRA ROW OF HINGES
- STEEL ROLLERS (Steel Standard on General Purpose)
- OMIT BALANCER
- OMIT TRACK
- METRIC THREAD ON HARDWARE

OTHER INFORMATION:

SERIAL NO. _____ SPEC# _____

ORDER INFO PER: _____ PHONE: _____ FAX: _____

EMAIL: _____



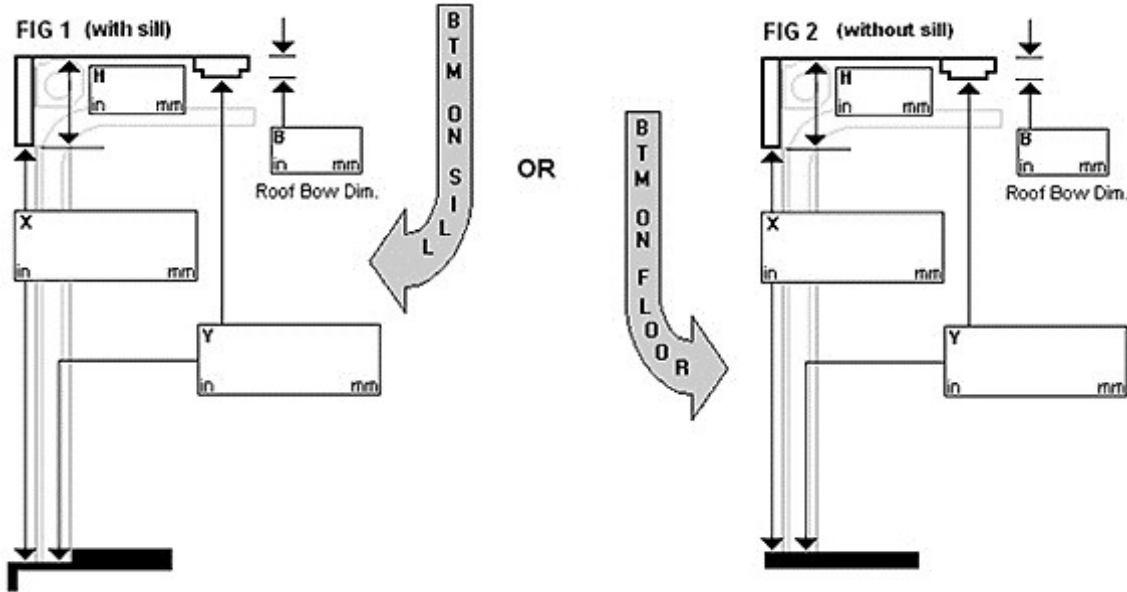
Quality Products for the Transportation Industry

Corporate Office: 113 Cedar Street, Akron, NY 14001

Phone: (716) 542-5427 Fax: (716) 542-5947

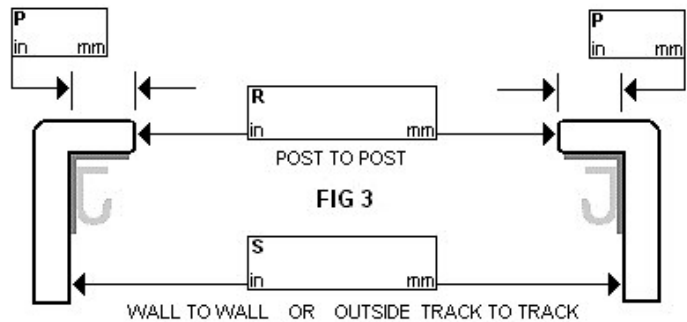
TRAILER OR TRUCK BODY DIMENSIONS

To ensure that doors fit properly,
Use figure (1 or 2) that best represents
your installation



The frame must be square

The wall to wall dimension should not vary. If walls do vary, use the narrowest point. May be necessary to shim the tracks to fit.



“H” — Header Depth — Distance from the underside (bottom of header) up to the roof skin or liner.

RECOMMENDED MINIMUM HEADER DIMENSIONS:

Dry-Freight	178 mm (7 in)
ColdSaver	203 mm (8 in)
TempGuard	203 mm (8 in)
Hinged Truss II	191 mm (7 1/2 in)

*If an installation requires the header to be shorter than the above minimums, insert new header dimension and notify us. Special track set-ups may accommodate your shorter header dimension.

“X” — Sill or Floor to Header — Distance from where the door sits on the sill or floor to the bottom of the header. It might also be called “Opening Height”

“Y” — Sill or Floor to Ceiling — Distance from the sill or floor to the bottom of the lowest obstruction — either a roof bow or the finished ceiling itself.

“P” — Minimum Post Dimension
64 mm (2 1/2 in)

“R” — Post to Post — Distance between the posts at the narrowest point. Also called “Opening Width”. The posts cannot be bowed or tapered.

“S” — Wall to Wall or Outside Track to Track — The point where the back side of the track will be positioned. This measurement must be the finished distance from wall to wall.

“B” — Roof Bow Thickness — Thickness of roof Support or ceiling liner.